

## Setup Guide

### Bullet 2 HP (or other AirOS products)

The Bullet 2HP comes from the factory with a default configuration of **Station/Bridge** mode, an IP address of **192.168.1.20**, Username: **ubnt**, and Password: **ubnt**.

Connect the Bullet to the POE injector (POE) port, then the Injector (LAN) port to the Computer and apply power. The lower two (of six small lights) should turn green indicating that power is applied and that the radio is on and the network link between the Bullet and the Computer is good. The Bullet will normally boot up in less than 60 seconds.

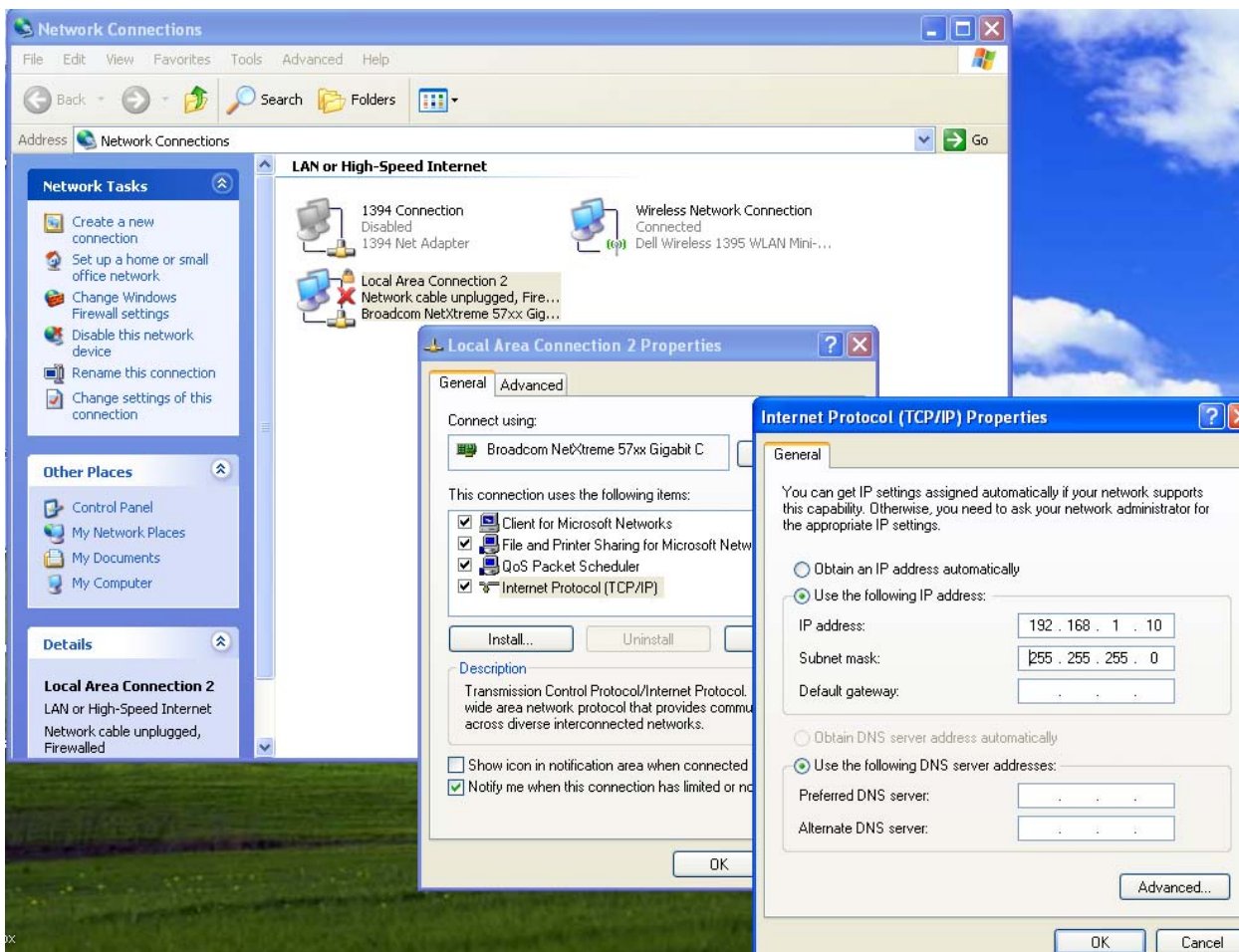
In order to configure the Bullet for first time use you will need to change the IP parameters of you Computer.

#### For Windows XP:

Go into Network Connection/Properties/Internet Protocol (TCP/IP)

Click "**Use the following IP address**" and enter 192.168.1.10 and subnet mask of 255.255.255.0

Click OK and the network adapter will be configured with this IP information.



Once you've reconfigured the network adapter wait a few seconds until the new IP address has been applied. Browse to <http://192.168.1.20>, and enter login (**ubnt**)/password (**ubnt**) when prompted and you should see the main Air OS setup screen. Click on the Network TAB and make the following changes:

**Network Mode:** Router

**WLAN IP Address:** DHCP

**IP Address:** 192.168.100.20

**Netmask:** 255.255.255.0

**Enable NAT:** check

**Enable DHCP:** check

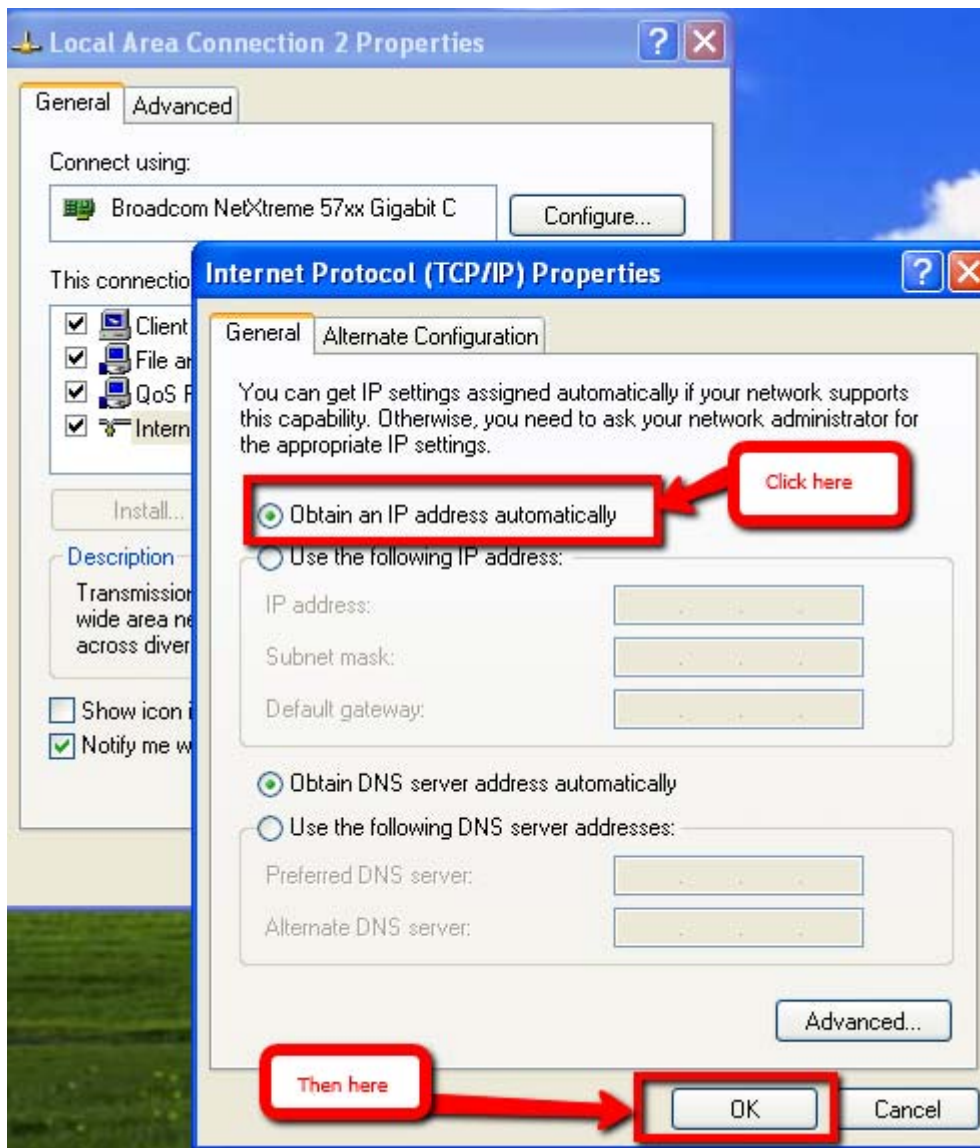
**Range Start:** 192.168.100.100

**Range End:** 192.168.100.200

The screenshot shows the Air OS Network configuration page. The 'Network' tab is selected. The 'Network Mode' is set to 'Router'. The 'WLAN NETWORK SETTINGS' section has 'DHCP' selected. The 'LAN NETWORK SETTINGS' section has the following values: IP Address: 192.168.100.20, Netmask: 255.255.255.0, Enable NAT: checked, Enable DHCP Server: checked, Range Start: 192.168.100.100, Range End: 192.168.100.200, Netmask: 255.255.255.0, Lease Time: 3600 seconds. Red annotations include: 'Select Router' pointing to the Network Mode dropdown; 'Check DHCP' pointing to the DHCP radio button; 'New IP Address and subnet mask' pointing to the IP Address and Netmask fields; 'Check these' pointing to the Enable NAT and Enable DHCP Server checkboxes; and 'Enter beginning and ending IP address range' pointing to the Range Start and Range End fields.

Make sure to click on the **Change** tab at the bottom of the setup screen and then on the **Apply** tab at the top of the screen.

The Bullet will then reboot and the changes that you have made will be applied. In order for you to be able to use the Bullet to connect to a WiFi Access Point you will need to now go back to Network Connection/Properties/Internet Protocol (TCP/IP) and re enable DHCP.



Click Obtain an IP address automatically

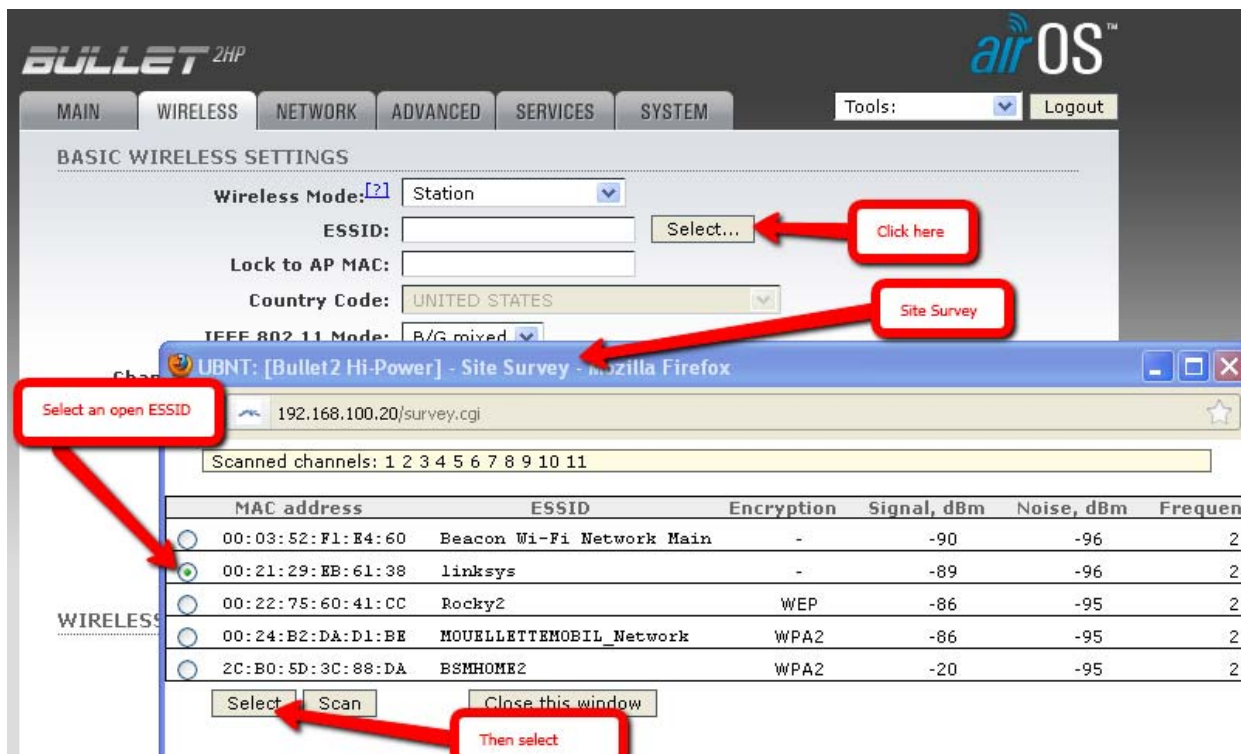
Then

Click OK

And wait while DHCP settings are applied to the network adapter and the link is re established.

Now open your Browser and Browse to the new IP address of the Bullet, 192.168.100.20 so that you can connect to a remote WiFi AP. You will have to reenter your login and password

When the AirOS Setup screen appears click on the Wireless tab and then on the ESSID Select... tab.



The Site Survey screen will appear. You will normally select the Access Point with the strongest Signal level (smallest -dBm = strongest signal) and then click Select. In a low WiFi Signal density area a signal strength of -90dBm or more will normally work. However, if there are lots of signals in the area then a stronger signal will be needed in order to provide a decent connection.

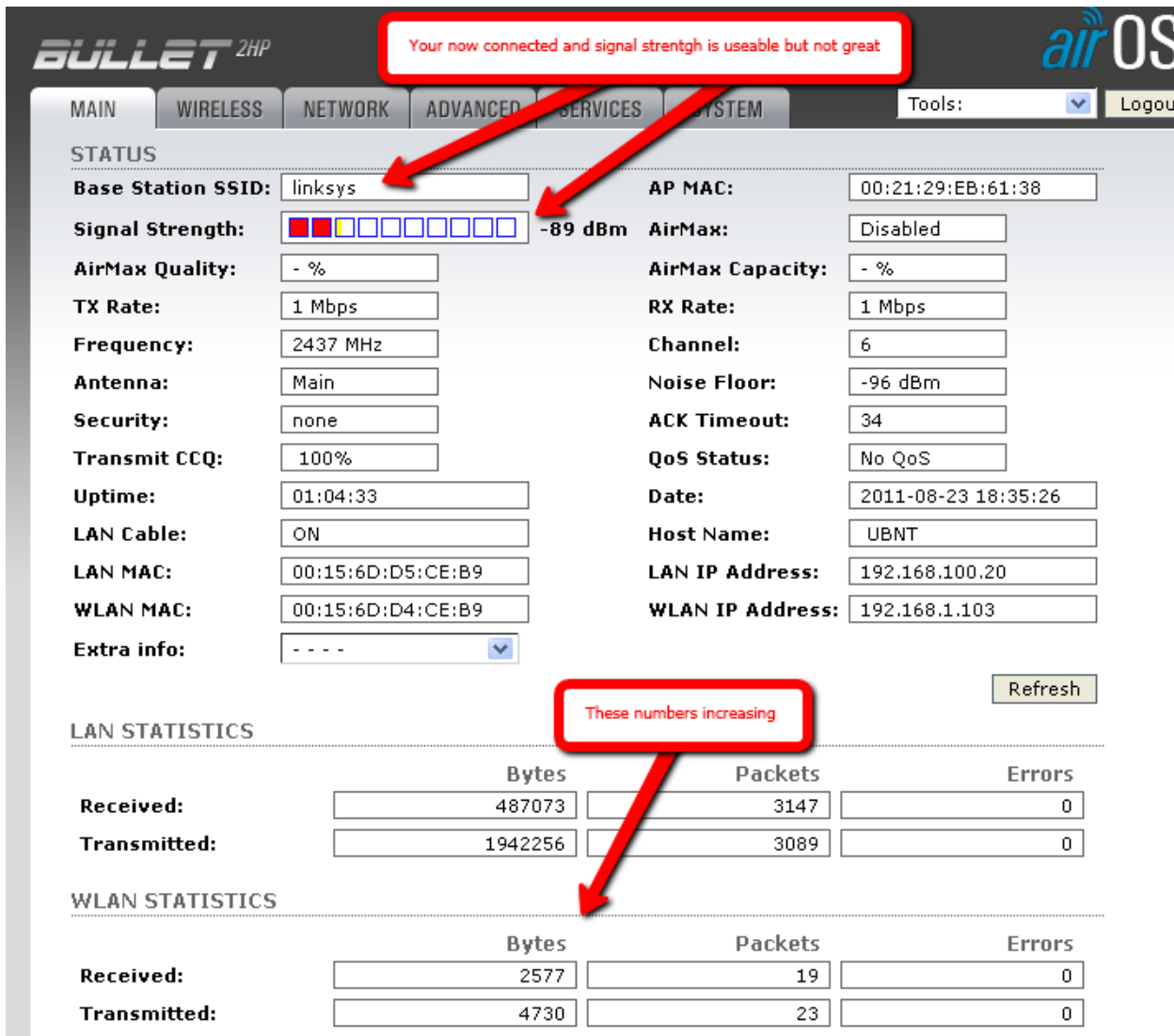
If you are Marina based or connecting to a pay for use Access Point, you would select the associated ESSID and then enter a password as required. A new screen will popup and at the bottom click Change....



Then at the top of the screen click Apply. Wait for the changes to be applied.



To verify that you are connected you can then click on the Main tab. You should see the SSID of the station that you tried to connect to, a signal strength indication stronger than -90dBm and the WLAN statistics should increase as you click the Main tab



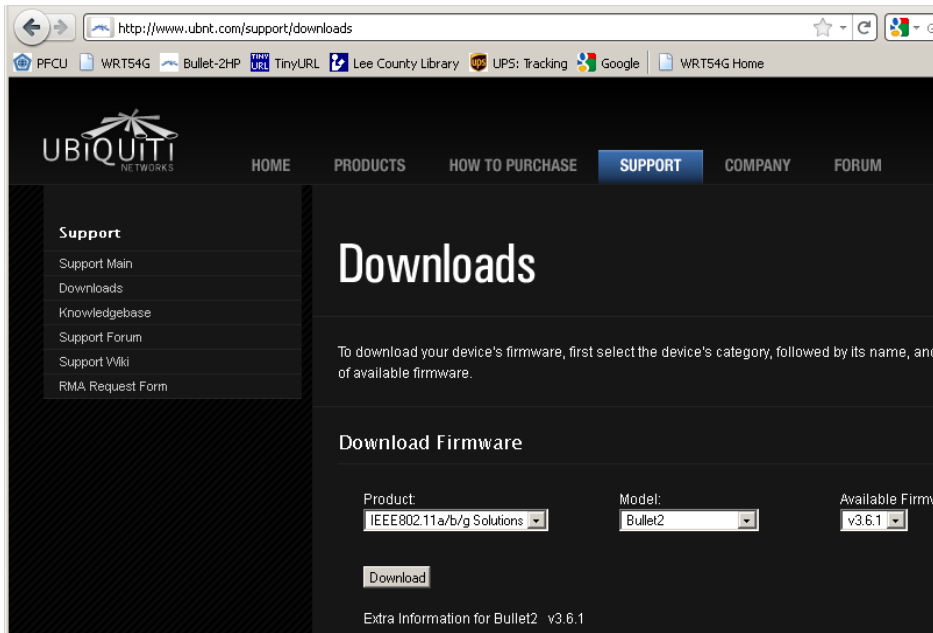
Remember, whenever you make any change – you have to apply it!



After the Bullet has been configured check to make sure that you have the latest firmware installed.

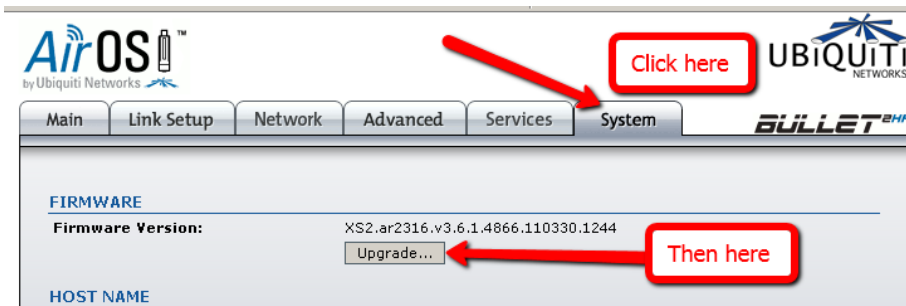
<http://www.ubnt.com/support/downloads>

Make ABSOLUTELY certain to download the firmware for the IEEE802.11a/b/g Solutions. The following screen shot is from the Ubiquiti Support Website.



Download the firmware and make a note of its location on your computer. The current file name is Bullet2HP-v4.0.1.build4978.bin.

To upload the file to the Bullet click on the System tab, then Upgrade.



Click the browse tab and select the firmware that you downloaded above. Now click the Upload tab and follow on screen instructions as the file is uploaded to the Bullet. The Upload can take several minutes and on screen instructions tell you not to power off until the upload is complete. The Bullet will then reboot to the new firmware.